

## A1



### Single Door Controller

- Out of the box ready browser managed
- Embedded Linux operating system
- 2 Readers (In/Out)
- 2 Relays (Lock/Aux)
- 3 Inputs (REX, DPS, Aux) Global
- UL listed - 294 Series 7
- 5 year warranty



#### Optional Accessories



PSDC24  
12VDC 2A  
Wall Power Supply

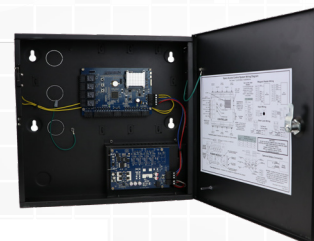
## A2E4/A2E4P



2 door controller, expandable up to 4 doors,  
basic power/power package

### Two Door Controller

- Embedded Linux operating system
- Expandable up to 4 doors  
(when used with A2M board)
- 2 Readers (In/Out)
- 2 Relays (Lock/Aux)
- 3 Inputs (REX, DPS, Aux) Global
- UL listed - 294 Series 7
- Lock Power on model A2E4P
- 5 year warranty



#### Optional Accessories



A2M  
Expansion Board

## AP300HA



### Mullion Proximity Reader

- Up to 5 in of read range
- Contactless Digital Radio Frequency Identification (RFID) technology
- Compliant with the Wiegand communication protocol
- IP67 compliant, weather resistant
- Tamper resistant
- UL listed
- Lifetime warranty

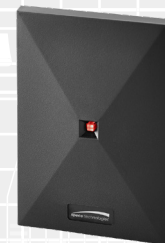


## AP500HA



### Proximity Reader

- Up to 8 in of read range
- Contactless Digital Radio Frequency Identification (RFID) technology
- Compliant with the Wiegand communication protocol
- IP67 compliant, weather resistant
- Tamper resistant
- UL listed
- Lifetime warranty



## AP620HA

### Mullion Proximity Reader & Keypad

- Up to 5 in of read range
- Contactless Digital Radio Frequency Identification (RFID) technology
- Compliant with the Wiegand communication protocol
- IP67 compliant, weather resistant
- Tamper resistant
- UL listed
- Lifetime warranty



## AP640HA

### Proximity Reader & Keypad

- Up to 7 in of read range
- Contactless Digital Radio Frequency Identification (RFID) technology
- Compliant with the Wiegand communication protocol
- IP67 compliant, weather resistant
- Tamper resistant
- UL listed
- Lifetime warranty



## ACSR35L

### Contactless Smartcard Reader

- Up to 15 feet of read range
- Contactless smartcard reader solution with mobile access support
- Digital Radio Frequency Identification (RFID) platform
- Supports both sector and card serial number (CSN) reads
- Offers the option of mobile access credentials loaded on Bluetooth Low Energy (BLE) enabled smartphones or contactless smartcard module
- IP67 compliant, weather resistant
- Tamper resistant
- UL Listed
- Lifetime warranty



## AWRR44

### Long Range Receiver

- Up to 200 feet of read range
- Ultra high frequency (UHF) technology
- Receiver range covers a 360-degree radius and does not need to be installed in line-of-sight to the Transmitters to function
- Equipped with a potted proximity or contactless smartcard module
- IP65 compliant, weather resistant
- UL Listed
- 1 year warranty

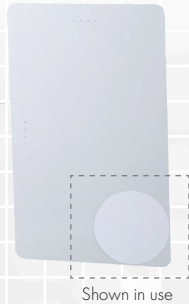


## APDT1



### Proximity Disc Tag

- Up to 3.5in contactless read range
- Contactless Digital Radio Frequency Identification (RFID) technology
- Frequency 125kHz
- Pack quantity: 25 cards
- Lifetime warranty
- Use with AP300HA, AP500HA, AP620HA, AP640HA



## APSC1



### Clamshell Proximity Card

- Up to 8in contactless read range
- Contactless Digital Radio Frequency Identification (RFID) technology
- Frequency 125kHz
- Pack quantity: 25 cards
- Lifetime warranty
- Use with AP300HA, AP500HA, AP620HA, AP640HA



## APSK3



### Proximity Key Ring Tag

- Up to 3.5in contactless read range
- Digital Radio Frequency Identification (RFID) technology
- Frequency 125kHz
- Pack quantity: 25 tags
- Lifetime warranty
- Use with AP300HA, AP500HA, AP620HA, AP640HA



## APSI4



### Proximity Card

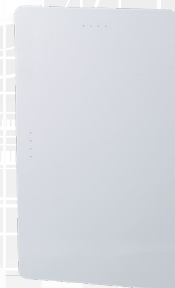
- Up to 7in contactless read range
- Contactless Digital Radio Frequency Identification (RFID) technology
- Frequency 125kHz
- Pack quantity: 25 cards
- Lifetime warranty
- Use with AP300HA, AP500HA, AP620HA, AP640HA



## APSM2P

### Imageable Proximity Card

- Up to 7in read range
- Digital Radio Frequency Identification (RFID) technology
- Frequency 125kHz
- Pack quantity: 25 cards
- 1 year warranty
- Use with AP300HA, AP500HA, AP620HA, AP640HA



## ACMC2



### Mobile Credential for BLE Reader

- Up to 15ft read range
- Supports both presentation and longer-range options
- Bluetooth Low Energy: operates with mobile ready readers
- High Security Encryption Technology: protected behind the smartphone's security parameters
- Respect for Privacy: easy one-time registration without disclosure of private information
- Pack quantity: 25 codes
- Use with ACSR35L



## ACSC2



### Clamshell Credential for BLE Reader

- Up to 2.25in read range
- High-Security Encryption Technology
- Frequency 13.56MHz
- Fraudulent Data Detection Solution
- Lifetime warranty
- Pack quantity: 25 cards
- Use with ACSR35L



## ACSK2



### Key Fob for BLE Reader

- Up to 1in read range
- High-Security Encryption Technology
- Frequency 13.56MHz
- Fraudulent Data Detection Solution
- Pack quantity: 25 cards
- 1 year warranty
- Use with ACSR35L



## ACSM2P



### Smartcard Credential

- Up to 2.25in read range
- Frequency 13.56MHz
- High-Security Encryption Technology
- 1 year warranty
- Pack quantity: 25 cards
- Use with ACSR35L



## AWRT4

### Long Range Transmitters

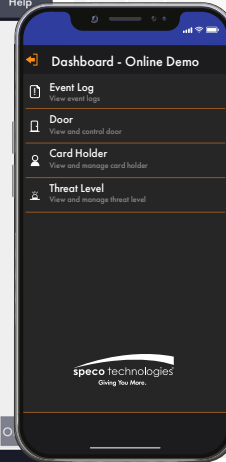
- Up to 200ft button press read range; Up to 3.5in presentation read range
- Proven Digital Ultra High Frequency (UHF) technology
- IP65 compliant, weather resistant
- UL listed - Standard 294
- Pack quantity: 5 transmitters
- 1 year warranty
- Use with AWRR44



# speco access

Speco Access is browser based and mobile app managed for viewing events, door control, and **threat level lock down!**

LOG	ACK	0	Door 1	M	E	AO 1
Time	Device Name	User Name	Event Code	Event Description		
07-25-2019 04:00:26	192.168.20.167	admin	15107	Web User Login		
07-25-2019 03:58:36	Door 1		600	Door Locked		
07-25-2019 03:58:32	Door 1		601	Door Unlocked (nr1::Channel 1)		



- Auto Live Camera Pop-Up
- View A Camera
- Event Tag

## SEAMLESS INTEGRATION WITH SPECO'S NR SERIES NETWORK VIDEO RECORDERS

### with 2 Factor Authentication



FACTOR 1

Employee #25

LOG	ACK	0	Door 1	M	E	AO 1
Time	Device Name	User Name	Event Code	Event Description		
07-25-2019 04:00:26	192.168.20.167	admin	15107	Web User Login		
07-25-2019 03:58:36	Door 1		600	Door Locked		
07-25-2019 03:58:32	Door 1		601	Door Unlocked (nr1::Channel 1)		

FACTOR 2

Use Speco Access as a **first factor** security measure to filter your workplace only letting in visitors with approved credentials. This includes our extensive line of Readers, Controllers and Credentials perfect for any application.

The **second factor** is the use of Speco's Facial Recognition solution that will check a database of your saved faces to see if the visitor is who they say they are.



\*Must use NRE recorder and O2BFRM cameras for this feature, fully configurable



**speco technologies**<sup>®</sup>

Giving You More.

Contact us at: **sales@specotech.com**

Toll Free: 1.800.645.5516 • Metro NY: 631.957.8700

200 New Highway, Amityville NY 11701

[www.specotech.com](http://www.specotech.com)

**EDITION: V.2** Rev. 06.02.2020

HDCATALOG2Q20

