

A1



Single Door Controller

- Out of the box ready browser managed
- Embedded Linux operating system
- 2 Readers (In/Out)
- 2 Relays (Lock/Aux)
- 3 Inputs (REX, DPS, Aux) Global
- UL listed - 294 Series 7
- 5 year warranty



Optional Accessories



PSDC24
12VDC 2A
Wall Power Supply

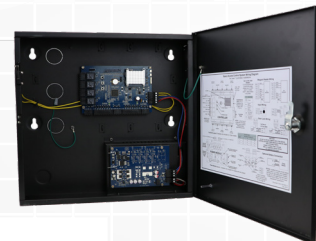
A2E4/A2E4P



2 door controller, expandable up to 4 doors,
basic power/power package

Two Door Controller

- Embedded Linux operating system
- Expandable up to 4 doors
(when used with A2M board)
- 2 Readers (In/Out)
- 2 Relays (Lock/Aux)
- 3 Inputs (REX, DPS, Aux) Global
- UL listed - 294 Series 7
- Lock Power on model A2E4P
- 5 year warranty



Optional Accessories



A2M
Expansion Board

AP300HA



Mullion Proximity Reader

- Up to 5 in of read range
- Contactless Digital Radio Frequency Identification (RFID) technology
- Compliant with the Wiegand communication protocol
- IP67 compliant, weather resistant
- Tamper resistant
- UL listed
- Lifetime warranty

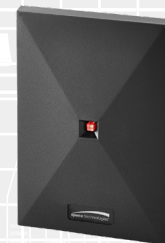


AP500HA



Proximity Reader

- Up to 8 in of read range
- Contactless Digital Radio Frequency Identification (RFID) technology
- Compliant with the Wiegand communication protocol
- IP67 compliant, weather resistant
- Tamper resistant
- UL listed
- Lifetime warranty



AP620HA

Mullion Proximity Reader & Keypad

- Up to 5 in of read range
- Contactless Digital Radio Frequency Identification (RFID) technology
- Compliant with the Wiegand communication protocol
- IP67 compliant, weather resistant
- Tamper resistant
- UL listed
- Lifetime warranty



AP640HA

Proximity Reader & Keypad

- Up to 7 in of read range
- Contactless Digital Radio Frequency Identification (RFID) technology
- Compliant with the Wiegand communication protocol
- IP67 compliant, weather resistant
- Tamper resistant
- UL listed
- Lifetime warranty



ACSR35L

Contactless Smartcard Reader

- Up to 15 feet of read range
- Contactless smartcard reader solution with mobile access support
- Digital Radio Frequency Identification (RFID) platform
- Supports both sector and card serial number (CSN) reads
- Offers the option of mobile access credentials loaded on Bluetooth Low Energy (BLE) enabled smartphones or contactless smartcard module
- IP67 compliant, weather resistant
- Tamper resistant
- UL Listed
- Lifetime warranty



Shown in Switch Plate



AWRR44

Long Range Receiver

- Up to 200 feet of read range
- Ultra high frequency (UHF) technology
- Receiver range covers a 360-degree radius and does not need to be installed in line-of-sight to the Transmitters to function
- Equipped with a potted proximity or contactless smartcard module
- IP65 compliant, weather resistant
- UL Listed
- 1 year warranty

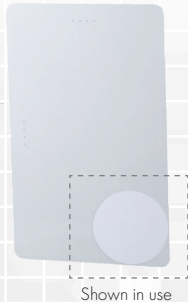


APDT1



Proximity Disc Tag

- Up to 3.5in contactless read range
- Contactless Digital Radio Frequency Identification (RFID) technology
- Frequency 125kHz
- Pack quantity: 25 cards
- Lifetime warranty
- Use with AP300HA, AP500HA, AP620HA, AP640HA



Shown in use



APSC1



Clamshell Proximity Card

- Up to 8in contactless read range
- Contactless Digital Radio Frequency Identification (RFID) technology
- Frequency 125kHz
- Pack quantity: 25 cards
- Lifetime warranty
- Use with AP300HA, AP500HA, AP620HA, AP640HA



APSK3



Proximity Key Ring Tag

- Up to 3.5in contactless read range
- Digital Radio Frequency Identification (RFID) technology
- Frequency 125kHz
- Pack quantity: 25 tags
- Lifetime warranty
- Use with AP300HA, AP500HA, AP620HA, AP640HA



APSI4



Proximity Card

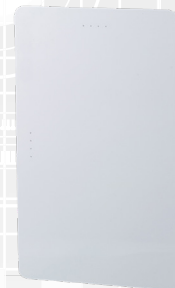
- Up to 7in contactless read range
- Contactless Digital Radio Frequency Identification (RFID) technology
- Frequency 125kHz
- Pack quantity: 25 cards
- Lifetime warranty
- Use with AP300HA, AP500HA, AP620HA, AP640HA



APSM2P

Imageable Proximity Card

- Up to 7in read range
- Digital Radio Frequency Identification (RFID) technology
- Frequency 125kHz
- Pack quantity: 25 cards
- 1 year warranty
- Use with AP300HA, AP500HA, AP620HA, AP640HA



ACMC2



Mobile Credential for BLE Reader

- Up to 15ft read range
- Supports both presentation and longer-range options
- Bluetooth Low Energy: operates with mobile ready readers
- High Security Encryption Technology: protected behind the smartphone's security parameters
- Respect for Privacy: easy one-time registration without disclosure of private information
- Pack quantity: 25 codes
- Use with ACSR35L



ACSC2



Clamshell Credential for BLE Reader

- Up to 2.25in read range
- High-Security Encryption Technology
- Frequency 13.56MHz
- Fraudulent Data Detection Solution
- Lifetime warranty
- Pack quantity: 25 cards
- Use with ACSR35L



ACSK2



Key Fob for BLE Reader

- Up to 1in read range
- High-Security Encryption Technology
- Frequency 13.56MHz
- Fraudulent Data Detection Solution
- Pack quantity: 25 cards
- 1 year warranty
- Use with ACSR35L



ACSM2P



Smartcard Credential

- Up to 2.25in read range
- Frequency 13.56MHz
- High-Security Encryption Technology
- 1 year warranty
- Pack quantity: 25 cards
- Use with ACSR35L



AWRT4

Long Range Transmitters

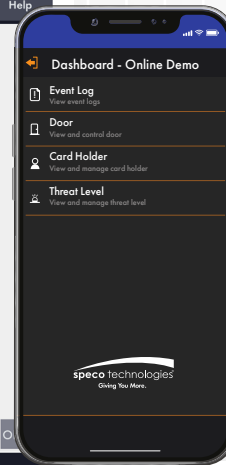
- Up to 200ft button press read range; Up to 3.5in presentation read range
- Proven Digital Ultra High Frequency (UHF) technology
- IP65 compliant, weather resistant
- UL listed - Standard 294
- Pack quantity: 5 transmitters
- 1 year warranty
- Use with AWRR44



speco access

Speco Access is browser based and mobile app managed for viewing events, door control, and **threat level lock down!**

| LOG | ACK | 0 | Door 1 | M | E | AO 1 |
|---------------------|----------------|-----------|------------|---------------------------------|---|------|
| Time | Device Name | User Name | Event Code | Event Description | | |
| 07-25-2019 04:00:26 | 192.168.20.167 | admin | 15107 | Web User Login | | |
| 07-25-2019 03:58:36 | Door 1 | | 600 | Door Locked | | |
| 07-25-2019 03:58:32 | Door 1 | | 601 | Door Unlocked (nvr1::Channel 1) | | |



- Auto Live Camera Pop-Up
- View A Camera
- Event Tag

SEAMLESS INTEGRATION WITH SPECO'S NR SERIES NETWORK VIDEO RECORDERS

with 2 Factor Authentication



FACTOR 1

Employee #25

| LOG | ACK | 0 | Door 1 | M | E | AO 1 |
|---------------------|----------------|-----------|------------|---------------------------------|---|------|
| Time | Device Name | User Name | Event Code | Event Description | | |
| 07-25-2019 04:00:26 | 192.168.20.167 | admin | 15107 | Web User Login | | |
| 07-25-2019 03:58:36 | Door 1 | | 600 | Door Locked | | |
| 07-25-2019 03:58:32 | Door 1 | | 601 | Door Unlocked (nvr1::Channel 1) | | |

FACTOR 2

Use Speco Access as a **first factor** security measure to filter your workplace only letting in visitors with approved credentials. This includes our extensive line of Readers, Controllers and Credentials perfect for any application.

The **second factor** is the use of Speco's Facial Recognition solution that will check a database of your saved faces to see if the visitor is who they say they are.



*Must use NRE recorder and O2BFRM cameras for this feature, fully configurable